

**BALDOR® • RELIANCE** 

**Product Information Packet**

**EMVM3613C**

**3.7KW,3450RPM,3PH,60HZ,D100LC,3634M,TEFC**

Part Detail							
Revision:	E	Status:	PRD/A	Change #:		Proprietary:	No
Type:	AC	Elec. Spec:	36WGT202	CD Diagram:	CD0005	Mfg Plant:	
Mech. Spec:	36H178	Layout:	36LYH178	Poles:	02	Created Date:	05-07-2015
Base:	N	Eff. Date:	08-06-2019	Leads:	9#16		

Specs			
Catalog Number:	EMVM3613C	Heater Indicator:	No Heater
Enclosure:	TEFC	Insulation Class:	F
Frame:	D100LC	Inverter Code:	Inverter Ready
Frame Material:	Steel	KVA Code:	G
Output @ Frequency:	3.700 KW @ 60 HZ	Lifting Lugs:	No Lifting Lugs
Synchronous Speed @ Frequency:	3600 RPM @ 60 HZ	Locked Bearing Indicator:	Locked Bearing
Voltage @ Frequency:	460.0 V @ 60 HZ	Motor Lead Quantity/Wire Size:	9 @ 16 AWG
	230.0 V @ 60 HZ	Motor Lead Exit:	Ko Box
XP Class and Group:	None	Motor Lead Termination:	Flying Leads
XP Division:	Not Applicable	Motor Type:	3634M
Agency Approvals:	CE	Mounting Arrangement:	B14
	CSA EEV	Power Factor:	93
Auxillary Box:	No Auxillary Box	Product Family:	General Purpose
Auxillary Box Lead Termination:	None	Pulley End Bearing Type:	Ball
Base Indicator:	No Mounting	Pulley Face Code:	C-Face
Bearing Grease Type:	Polyrex EM (-20F +300F)	Pulley Shaft Indicator:	Tapped & Key
Blower:	None	Rodent Screen:	None
Current @ Voltage:	11.200 A @ 230.0 V	Shaft Extension Location:	Pulley End

Product Information Packet: EMVM3613C - 3.7KW,3450RPM,3PH,60HZ,D100LC,3634M,TEFC

	12.400 A @ 208.0 V	<b>Shaft Ground Indicator:</b>	No Shaft Grounding
	5.600 A @ 460.0 V	<b>Shaft Rotation:</b>	Reversible
<b>Design Code:</b>	B	<b>Shaft Slinger Indicator:</b>	No Slinger
<b>Drip Cover:</b>	No Drip Cover	<b>Speed Code:</b>	Single Speed
<b>Duty Rating:</b>	CONT	<b>Motor Standards:</b>	IEC
<b>Electrically Isolated Bearing:</b>	Not Electrically Isolated	<b>Starting Method:</b>	Direct on line
<b>Feedback Device:</b>	NO FEEDBACK	<b>Thermal Device - Bearing:</b>	None
<b>Frame Prefix:</b>	D	<b>Thermal Device - Winding:</b>	None
<b>Front Face Code:</b>	Standard	<b>Vibration Sensor Indicator:</b>	No Vibration Sensor
<b>Front Shaft Indicator:</b>	None	<b>Winding Thermal 1:</b>	None
		<b>Winding Thermal 2:</b>	None

Nameplate NP3389L			
CAT.NO.	EMVM3613C		
SPEC.	36H178T202G1		
IEC FRAME	D100LC	KW	3.7
VOLTS	230/460		
AMP	11.2/5.6		
RPM	3450	ENCL	TEFC
HZ	60	PH	3
SER.F.	1.15	DES	B
NEMA-NOM-EFF	88.5	I.P.	54
RATING	40C AMB-CONT		
CC	010A	USABLE AT 208V	12.4
DE	6206	ODE	6205
SER. #			

Parts List		
Part Number	Description	Quantity
SA301016	SA 36H178T202G1	1.000 EA
RA288085	RA 36H178T202G1	1.000 EA
36FN3000C01SP	EXFN, PLASTIC, 5.25 OD, .912 ID	1.000 EA
36CB3004	36 CB CASTING W/1.09 DIA LEAD HOLE @ 6:0	1.000 EA
36GS1000SP	GASKET-CONDUIT BOX, .06 THICK #SV-330 LE	1.000 EA
51XB1016A08	10-16X 1/2HXWSSLD SERTYB	2.000 EA
11XW1032G06	10-32 X .38, TAPTITE II, HEX WSHR SLTD U	1.000 EA
HW3001B01	BRASS CUP WASHER, FOR #10 SCREW	1.000 EA
36EP3104A01	FREP MACH ASSEMBLY FOR ROUTING	1.000 EA
HW4500A01	1641B(ALEMITE)400 UNIV, GREASE FITT	1.000 EA
HW5100A05	WVY WSHR F/205 & 304 BRGS	1.000 EA
36EP1301A55	SPL PU ENDPLATE D110C-D112C W/SEAL	1.000 EA
HW4500A01	1641B(ALEMITE)400 UNIV, GREASE FITT	1.000 EA
HW4600B50	SEAL 1.156 X 1.874 X 0.250 SINGLE LIP DB	1.000 EA
10XN2520A24	1/4-20X 1 1/2 HEX HD X	4.000 EA
36FH4009A102	IEC FH GREASER PRIMED	1.000 EA
51XW1032A06	10-32 X .38, TAPTITE II, HEX WSHR SLTD S	3.000 EA
36CB4516	36 LIPPED CB LID - GALVANNEAL	1.000 EA
37GS1001SP	GASKET, CONDUIT BOX LID, .06 THICK LEXID	1.000 EA
51XW0832A07	8-32 X .44, TAPTITE II, HEX WSHR SLTD SE	4.000 EA
HW2505A14	KEY, 8 X 7 MM 1.50 INCHES	1.000 EA
MJ5001A27	32220KN GRAY SEALER *MIN BUY 4 QTS=1GAL	0.001 QT
85XU0407S04	4X1/4 U DRIVE PIN STAINLESS	2.000 EA
MJ1000A02	GREASE, MOBIL POLYREX EM - 124047	0.050 LB

<b>Parts List (continued)</b>		
<b>Part Number</b>	<b>Description</b>	<b>Quantity</b>
51XB1214A16	12-14X1.00 HXWSSLD SERTYB	1.000 EA
MG1000Y03	MUNSELL 2.53Y 6.70/ 4.60, GLOSS 20,	0.022 GA
HA3101A25	THRUBOLT 1/4-20 X 11.000 OHIO ROD	4.000 EA
LC0005E01	CONN.DIA./WARNING LABEL (LC0005/LB1119N)	1.000 EA
NP3389L	SS IEC SUPER E UL CSA-EEV NEMA PREMIUM	1.000 EA
36PA1001	PKG GRP, PRINT PK1017A06	1.000 EA
PK3082	STYROFOAM CRADLE	1.000 EA
MN416A01	TAG-INSTAL-MAINT no wire (1200/bx) 3/19	1.000 EA
LB1594	MYLAR WEEE WHEELIE BIN SYMBOL FOR CE MOT	1.000 EA

**AC Induction Motor Performance Data**

Record # 57404 - Typical performance - not guaranteed values

<b>Winding:</b> 36WGT202-R012	<b>Type:</b> 3634M	<b>Enclosure:</b> TEFC
-------------------------------	--------------------	------------------------

Nameplate Data				460 V, 60 Hz: High Voltage Connection	
Rated Output (KW)	3.7			Full Load Torque	7.54 LB-FT
Volts	230/460			Start Configuration	direct on line
Full Load Amps	11.2/5.6			Breakdown Torque	45.7 LB-FT
R.P.M.	3450			Pull-up Torque	31 LB-FT
Hz	60	Phase	3	Locked-rotor Torque	38.1 LB-FT
NEMA Design Code	B	KVA Code	G	Starting Current	36.4 A
Service Factor (S.F.)	1.15			No-load Current	2.23 A
NEMA Nom. Eff.	88.5	Power Factor	93	Line-line Res. @ 25°C	1.8592 Ω
Rating - Duty	40C AMB-CONT			Temp. Rise @ Rated Load	65°C
S.F. Amps				Temp. Rise @ S.F. Load	78°C

Load Characteristics 460 V, 60 Hz, 3.7 KW

% of Rated Load	25	50	75	100	125	150	S.F.
Power Factor	53	74	83	88	90	92	89
Efficiency	81	87.4	88.8	88.8	88.1	87.1	88.4
Speed	3571.6	3546.9	3521.5	3493.5	3464.6	3436.2	3476
Line amperes	2.74	3.63	4.75	6	7.36	8.7	6.82

Performance Graph at 460V, 60Hz, 3.7KW Typical performance - Not guaranteed values

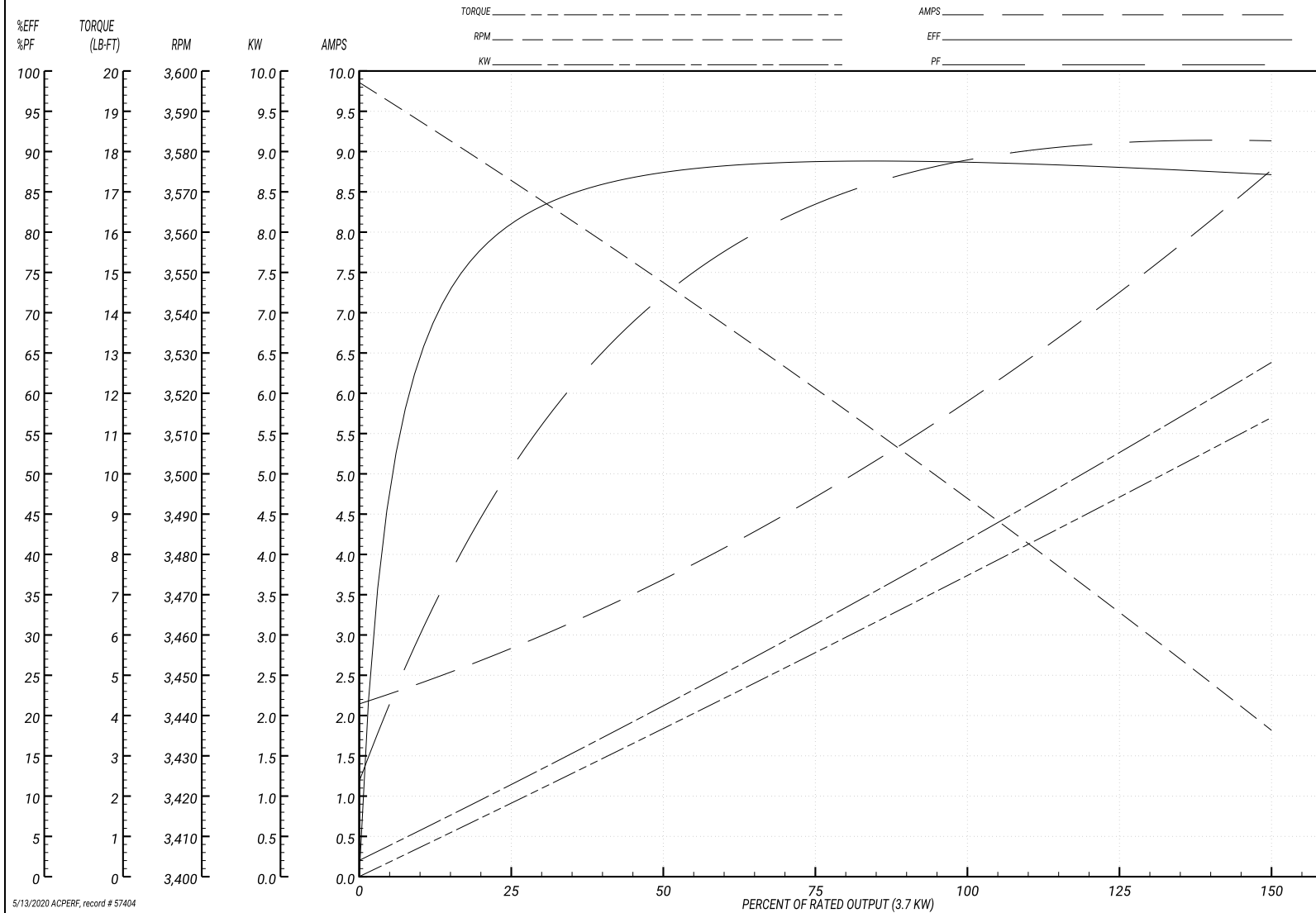
ABB Motors and Mechanical Inc.

WINDING # 36WGT202

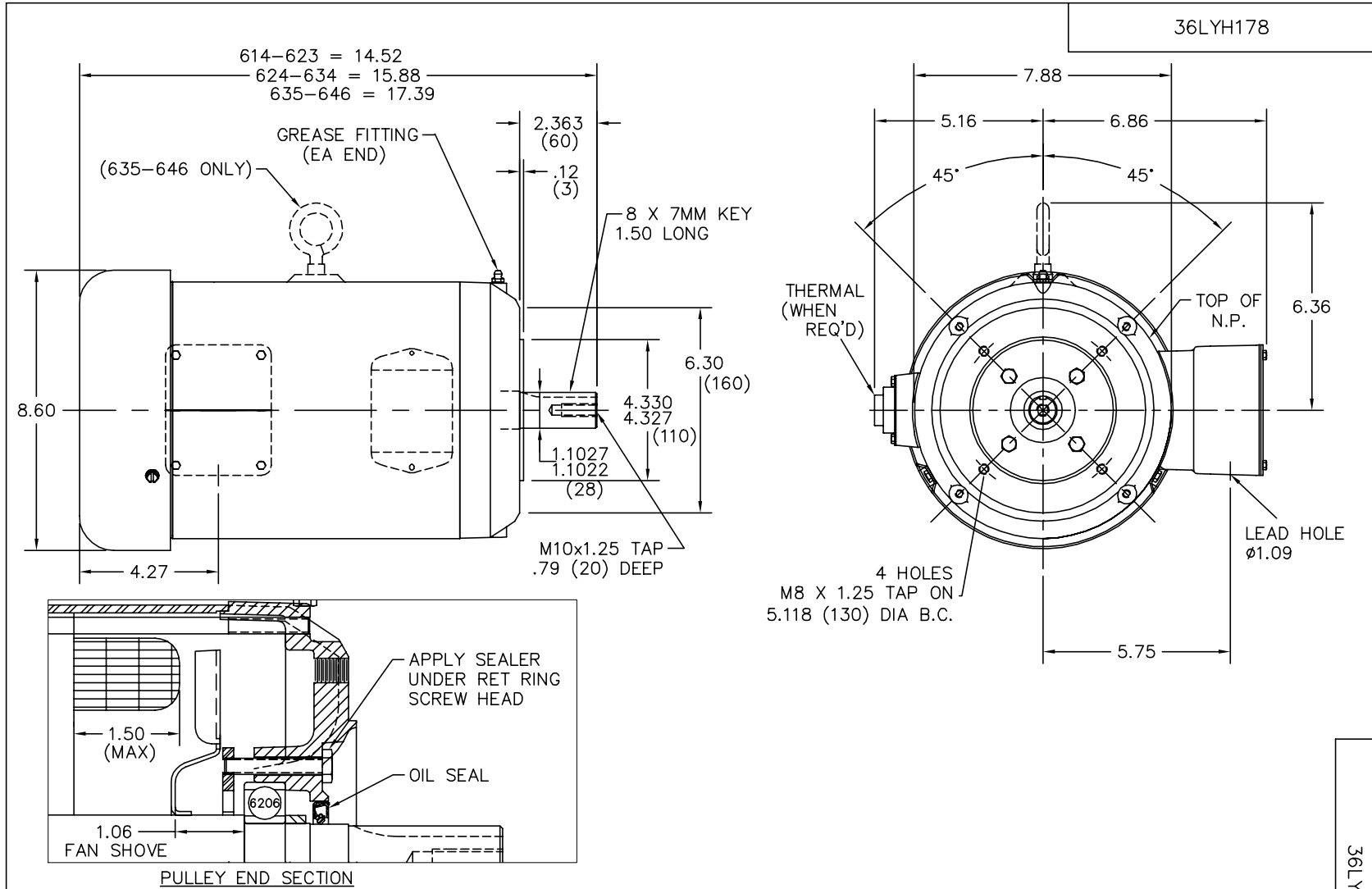
Typical performance - not guaranteed values.

3.7 KW 3 PH 60 HZ 3450 RPM 460 V 3634M

TORQUES(LB-FT): PO=45.7 PU=31 LR=38.1 LRA=36.4



5/13/2020 ACPERF, record # 57404



CUSTOMER IS RESPONSIBLE FOR DETERMINING THAT BALDOR'S PRODUCT WILL PERFORM SUITABLY IN THE INTENDED APPLICATION.

REV. DESC: REMOVE RED FROM SEALER NOTE		
REV. LTR: F	VERSION: 02	TDR: 000001071525
FILE: \AAA\00009\303	REVISED: 02:49:53 05/16/2018	BY: ENWINBO
MTL: -		

**BALDOR - RELIANCE®**

STD VERT IEC D100LC-D112MC TEFC 36M B14 MTG W/SEAL

SH 1 of 1

36LYH178

CD0005

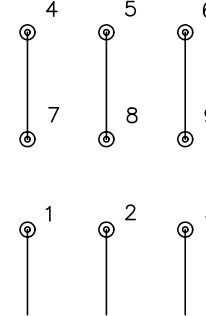


LOW VOLTAGE  
(2Y)



LINE

HIGH VOLTAGE  
(1Y)



LINE

NOTES:

1. INTERCHANGE ANY TWO LINE LEADS TO REVERSE ROTATION.
2. OPTIONAL THERMOSTATS ARE PROVIDED WHEN SPECIFIED.
3. ACTUAL NUMBER OF INTERNAL PARALLEL CIRCUITS MAY BE A MULTIPLE OF THOSE SHOWN ABOVE.
4. LEAD COLORS ARE OPTIONAL. LEADS MUST ALWAYS BE NUMBERED AS SHOWN.

REV. DESC: REVISE TO SHOW OPTIONAL COLORS			
REV. LTR: E	BY: JLP	REVISED: 01/19/99 10:15	TDR: 0171435
900000		FILE: AAA00005140	MDL: -
		MTL: -	

**BALDOR ELECTRIC Co.**

3PH, DV, 9 LEADS

CD0005